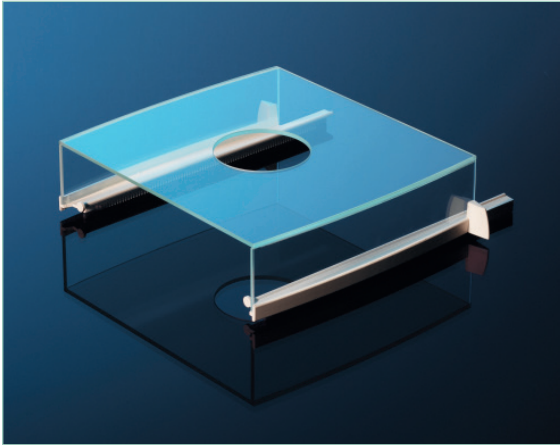


## Glueing: High-quality Assemblies

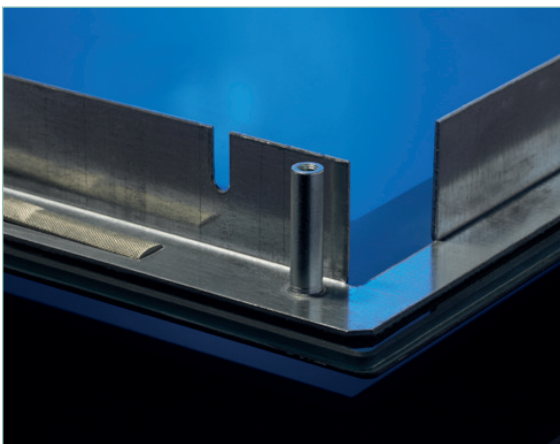


EuropTec combines glass with glass or with other materials like plastic components or metal frames according to customer requirements. We develop gluing constructions and concepts. Professional gluing processes can be manual processes optionally with the assistance of six-axis.

### Technical Data

Materials:            glass  
                         plastics  
                         metals in different combinations

Adhesive:            light-curing and moisture-curing acrylates  
                         adhesives like PSA, OCA  
                         MS-Polymere  
                         polyurethane PUR  
                         reactive PUR-Hot-Melts  
                         epoxide (even anisotropic)



## Advantages

- high precision
- transparent connection with perfect characteristics
- large-size elastic to high-strength connections
- extensive combinations with low stress
- sealing against different mediums
- compensation of different thermal expansions
- vibration damping

## Typical Applications

- display covers
- instruments and displays in automotive construction
- touches with glass fronts
- assembly of components

## General Properties

- Sound absorbing
- preservation of material characteristics
- power transmission is possible

Do you have questions or do you need an advice concerning to very varied possible applications of technical glass?  
Do not hesitate to contact us!



**EuropTec GmbH**  
**Display Glass Europe**  
Alte Heerstrasse 13, D-38644 Goslar  
info-goslar@europtec.com  
[www.europtec.com/display-glass-europe](http://www.europtec.com/display-glass-europe)

